

Rui Barbosa

Rui was physically similar to his father João José: short of stature – 1.58 m, the body of a teenager, skinny and slightly bent, weighing 48 kilos, his chest circumference was 84 cm, and his abdominal circumference was 72 cm; a large head, with few straight strands of hair, at odds with the body; it measured 57 cm in diameter and seemed larger due to its shape; large ears, a wide forehead, with a wide receding hairline; an oval, medium-sized face and an almost Greek nose; a well-shaped mouth, with a thick mustache falling over its corners, and a protruding, visibly prognathous lower lip; keen hyperopic eyes, a long neck, a 36 cm collar; with well-proportioned members, and the bronze completion of a backwoodsman. (Magalhães, Rejane, 2013)

“Those who knew Rui never found him ugly, such was the radiance of his kindness, the magnetism of his person, the prestige of his wonderful intelligence.” (PEREIRA, 1949, p. 32)

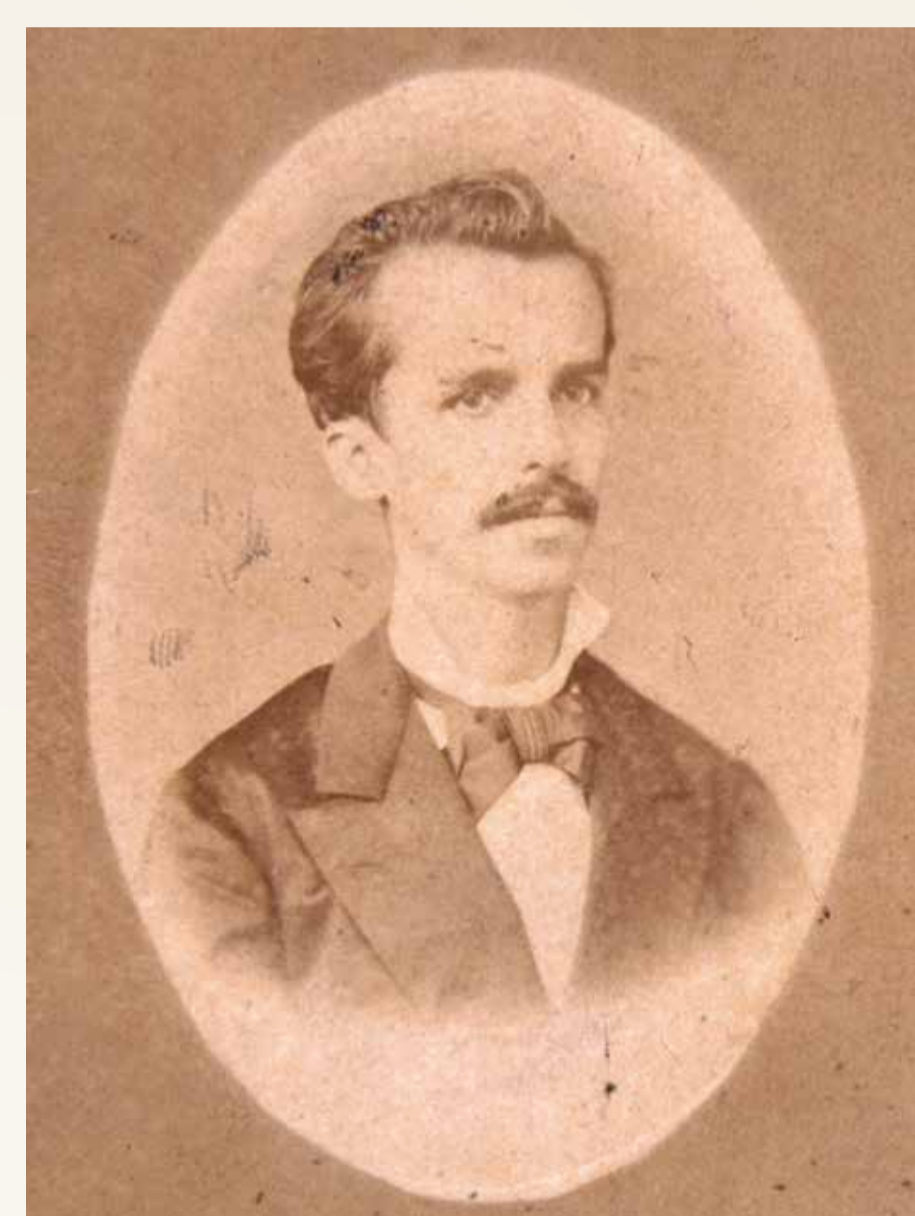
“He looked at others in a dominating way, frowning a little. [...] He was not a handsome man like Castro Alves, but perfect in body. [...] He laughed little, but smiling was common in him.” (BITTENCOURT, 1924, pp. 26-27)



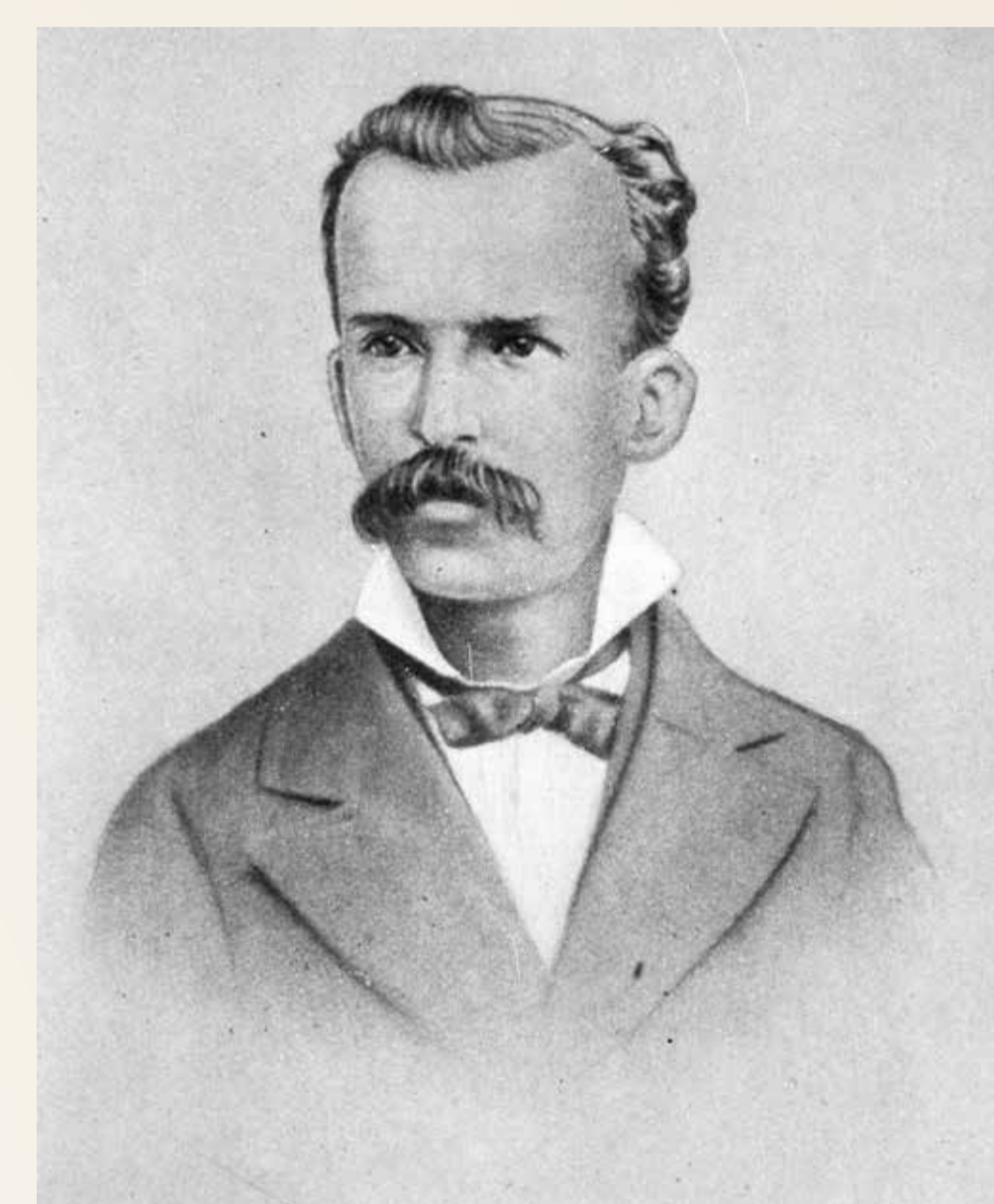
Rui Barbosa, Bahia, [1864]



Rui Barbosa, Paris, 1873



Rui Barbosa, Bahia, 1876



Rui Barbosa, [1882]



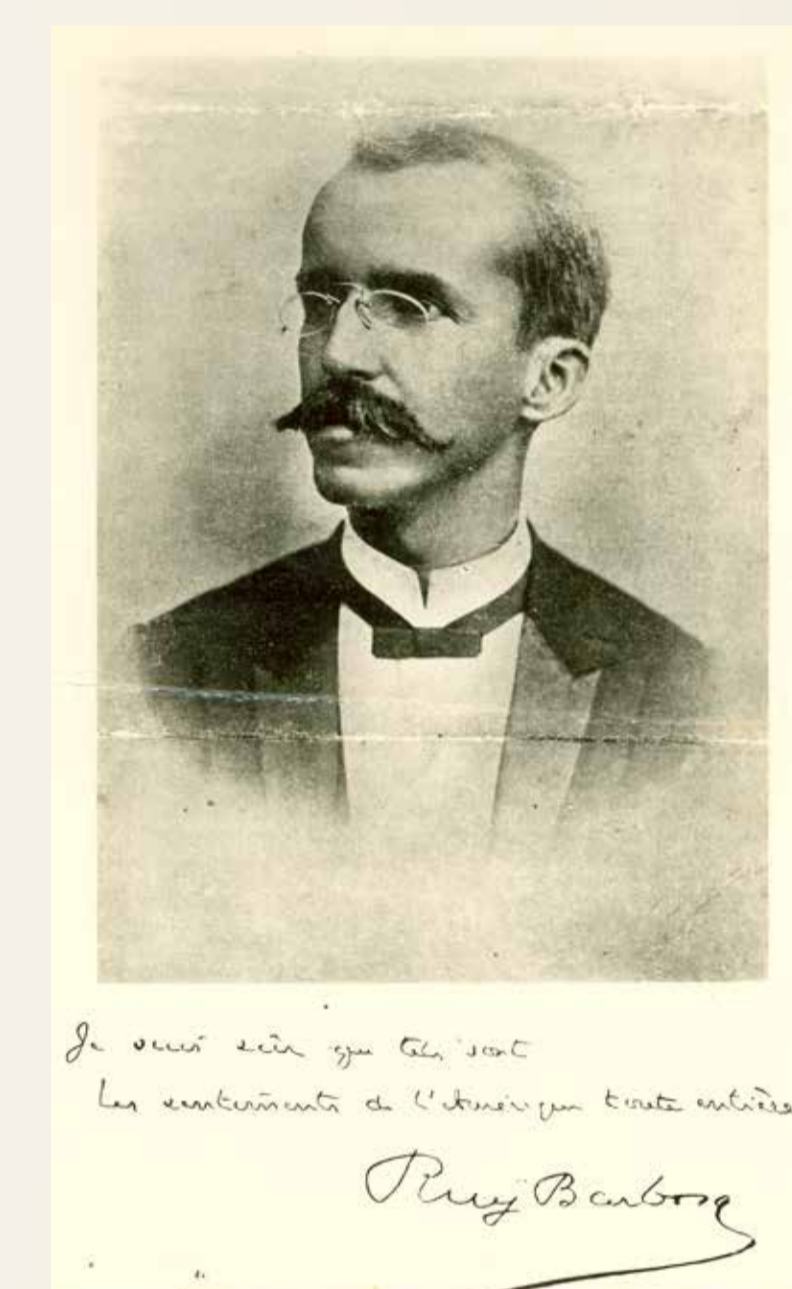
Rui Barbosa, 1889



Rui Barbosa, [1890]



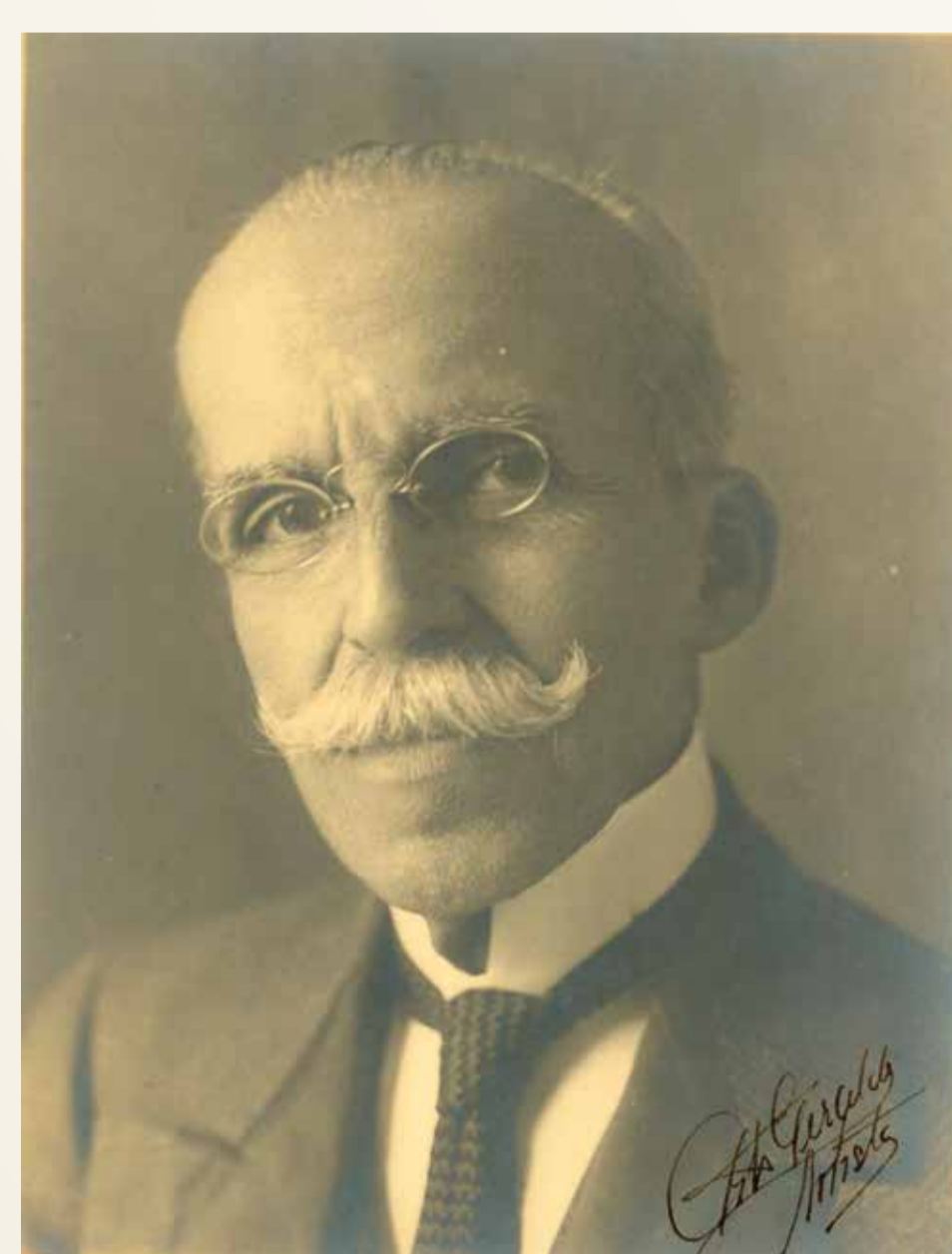
Rui Barbosa, 1891



Rui Barbosa, 1898



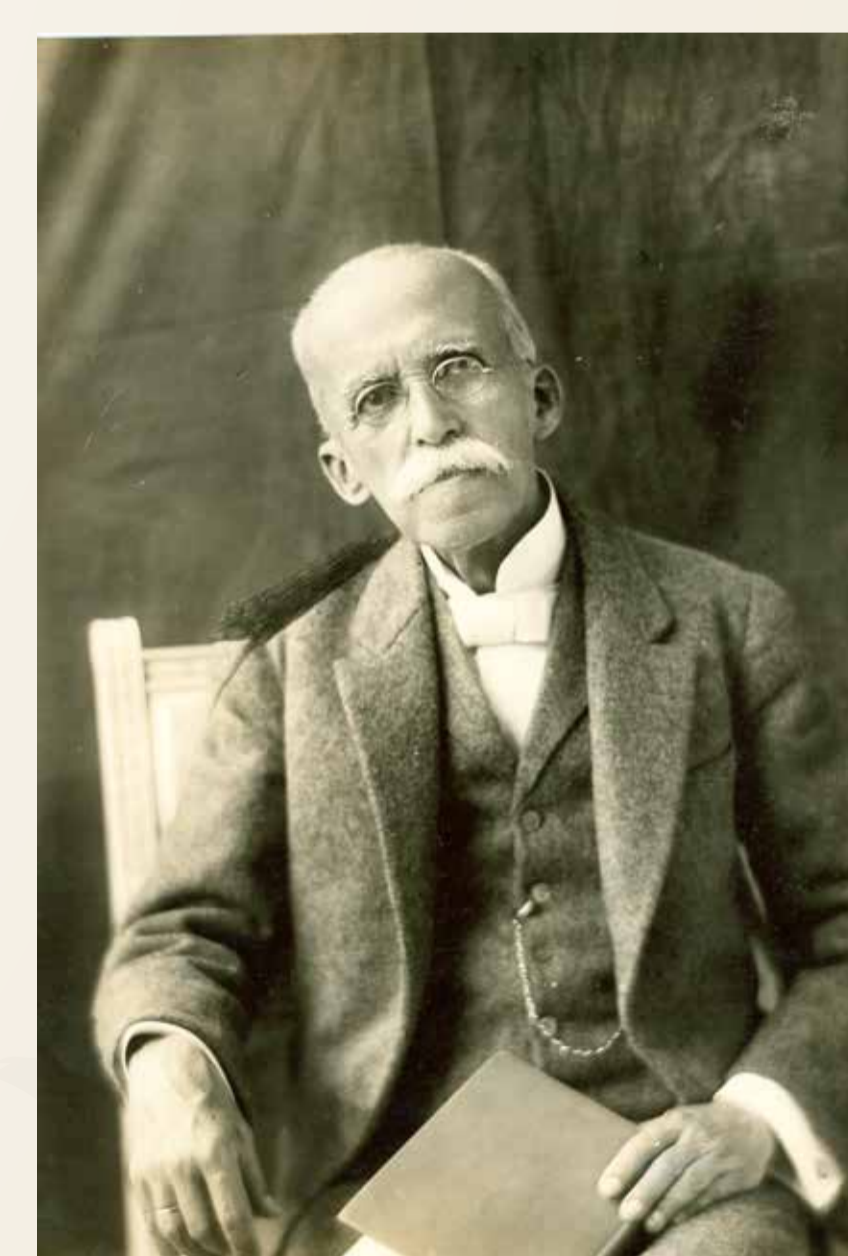
Rui Barbosa, 1907



Rui Barbosa, 1913



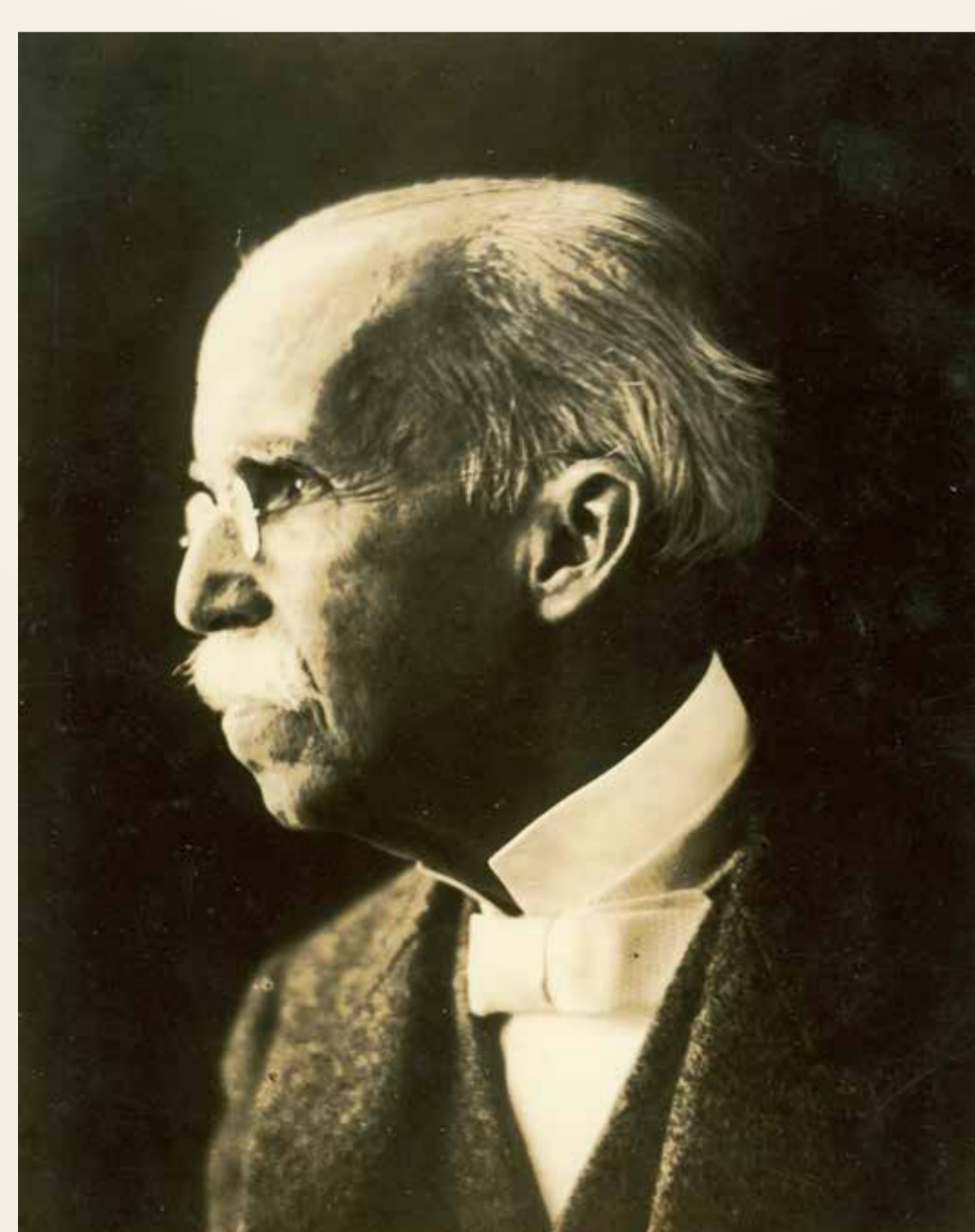
Rui Barbosa, 1916



Rui Barbosa, 1918



Rui Barbosa, 1920



Rui Barbosa, 1921



Rui Barbosa, 1922